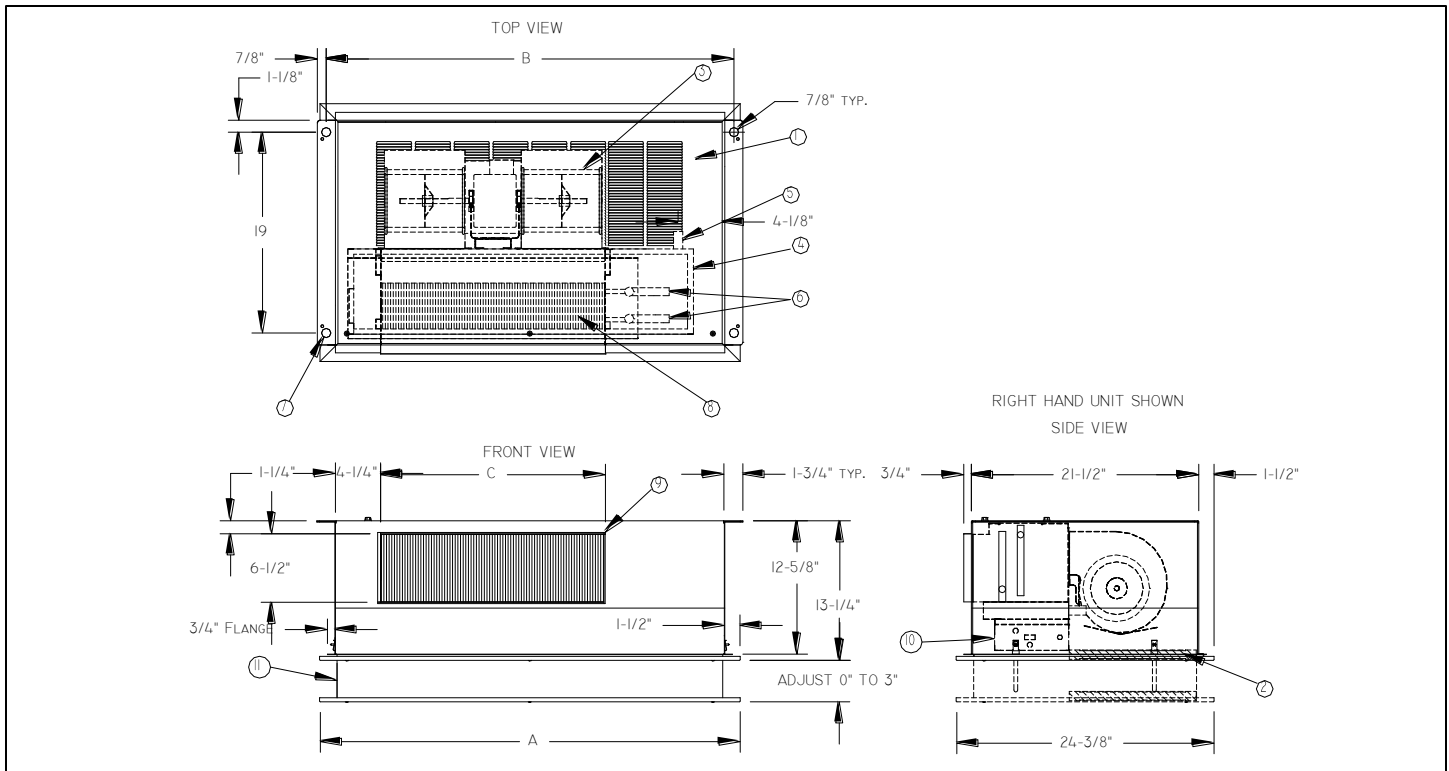


## THC

### Horizontal Basic Recessed Cabinet



Model	Dimensions (inches)					Approx. Weight (lb)
	A	B	C	D	Filter	
THC02	32 5/8	31 1/2	14 1/4	5/8	24x12x1	100
THC03	35 5/8	34 1/2	17 1/4	5/8	28x12x1	115
THC04	41 5/8	40 1/2	23 1/4	5/8	28x12x1	130
THC06	50 5/8	49 1/2	32 1/4	5/8	42x12x1	145
THC08	58 5/8	57 1/2	40 1/4	5/8	50x12x1	170
THC10	68 5/8	67 1/2	50 1/4	7/8	(2)30x12x1	200
THC12	78 5/8	77 1/2	60 1/4	7/8	(2)34x12x1	225

1. Return air grille (bottom return shown)
2. Filter
3. Blower / motor assembly
4. Condensate pan
5. Drain connection - 3/4" MNPT
6. Chilled water connections (supply and return)  
O.D. = 'D'; Hot water connections = 5/8" O.D.
7. Mounting holes with rubber grommets
8. Coil assembly
9. Supply air duct collar
10. Control/Electrical box
11. Telescoping return air frame

### Accessories (Optional)

Check  if provided.

- Thermostat \_\_\_\_\_
- Control Transformer & Fan Relays
- Aquastat Changeover Switch

- Washable Filter
- Unit Disconnect Switch
- Fuse
- Special Color \_\_\_\_\_ (specify)

This submittal is meant to demonstrate general dimensions of this product. The drawings are not meant to detail every aspect of the product. Drawings are not to scale. Superior Rex reserves the right to make changes without written notice.

All rights reserved. No part of this work may be reproduced or transmitted in any form or by any means, electronic or mechanical, including photocopying and recording, or by any information storage retrieval system without permission in writing from Air Distribution Technologies.

## Accessories (Optional)

Coil - 3/8" O.D. Copper Tube; 10 Fins/Inch Aluminum, Sine Wave

### 2-Pipe

- 2-Row (STD.)   
  3-Row (STD.)   
  4-Row   
  5-Row

### 4-Pipe (Cooling Rows/Heating Rows)

- 2/1-Row   
  3/1-Row   
  3/2-Row   
  4/1-Row

- Chilled Water Cooling                     
  Hot Water Heating  
 Glycol Cooling                                     
  Glycol Heating

## Motor

### Motor(s) – 3-speed PSC

Standard  
115V/60Hz/1ph

Model	HP	Total Amps
THC02	<sup>1</sup> / <sub>20</sub>	0.8
THC03	<sup>1</sup> / <sub>20</sub>	0.8
THC04	<sup>1</sup> / <sub>20</sub>	0.8
THC06	<sup>1</sup> / <sub>10</sub>	1.5
THC08	<sup>1</sup> / <sub>10</sub>	1.5
THC10	2 x <sup>1</sup> / <sub>10</sub>	2 x 1.5
THC12	2 x <sup>1</sup> / <sub>10</sub>	2 x 1.5

### Optional:

- 208V/60Hz/1ph.  
 230V/60Hz/1ph  
 277V/60Hz/1ph

### Features:

- Automatic Reset
- Thermal Overload Protection System

## Electric Heat – Single Phase (Optional)

Heater Voltage	Size	Blowers	Electric Heater kW Primary or Supplementary			
			115 Volts	208 Volts	230 Volts	277 Volts
			Min-Max kW	Min-Max kW	Min-Max kW	Min-Max kW
<input type="checkbox"/> 115V	02	1	1-2 kW	1-2 kW	1-2 kW	1-2 kW
<input type="checkbox"/> 208V	03	1	1-3 kW	1-3 kW	1-3 kW	1-3 kW
<input type="checkbox"/> 230V	04	2	1-4 kW	1-4 kW	1-4 kW	1-4 kW
<input type="checkbox"/> 277V	06	2	1-4 kW	1-6 kW	1-6 kW	1-6 kW
	08	2	1-4 kW	1-8 kW	1-8 kW	1-8 kW
	10	4	2-4 kW	2-9 kW	2-10 kW	2-10 kW
	12	4	2-4 kW	2-9 kW	2-10 kW	2-12 kW

## Condensate Pan

- |  |  |
|--|--|
| <input type="checkbox"/> Galvanized (STD.)             | <input type="checkbox"/> Safety Overflow Float Switch* |
| <input type="checkbox"/> Safety (Two) Drain Connection |  |
| <input type="checkbox"/> Extended Pan                  |  |
| <input type="checkbox"/> Mastic Coating                |  |
| <input type="checkbox"/> Stainless Steel Inner Layer   |  |
| <input type="checkbox"/> Marine (3" Deep)              |  |
| <input type="checkbox"/> Marine with Anti-Slosh Media  |  |

Description: Inner and Outer Layer of 18 gauge Galvanized Sheet Metal with One - Inch Internal Insulation

\*24V, requires transformer and fan relay if not obtained with a 24V thermostat.

## Valves and Valve Accessories

- |  |  |
|--|--|
| <input type="checkbox"/> Shut - Off Valve(s)             | <input type="checkbox"/> Strainer(s)                     |
| <input type="checkbox"/> Shut - Off Valve w/ Memory Stop | <input type="checkbox"/> Manual Flow Control Valve(s)    |
| <input type="checkbox"/> 2 - Way Motorized Valve         | <input type="checkbox"/> Automatic Flow Control Valve(s) |
| <input type="checkbox"/> 3 - Way Motorized Valve         | <input type="checkbox"/> Unions                          |
| <input type="checkbox"/> 2 - Way Modulating Valve        | <input type="checkbox"/> Pete's Plug(s)                  |

## General Description

- This horizontal discharge, attractively styled, cabinet unit is ideally suited for over-ceiling applications. The telescopic bottom frame with a full 3 inch vertical adjustment and hinged panel fits any ceiling type.
- Hinged bottom panel fabricated of 18 gauge galvanealed steel with Rock Beige or White powder-coated paint. Cabinet is 18 gauge galvanized sheet metal lined with 1/2" matte-faced liner for maximum thermal and acoustical insulation.
- Removable motor/blower assembly.
- Throwaway filter.
- Manual air vent.
- System charged with air to insure a leak free arrival at the job site.

This submittal is meant to demonstrate general dimensions of this product. The drawings are not meant to detail every aspect of the product. Drawings are not to scale. Superior Rex reserves the right to make changes without written notice.

All rights reserved. No part of this work may be reproduced or transmitted in any form or by any means, electronic or mechanical, including photocopying and recording, or by any information storage retrieval system without permission in writing from Air Distribution Technologies.